



BCC Mail Manager™

Comprehensive Postal Software Solution

» Complete. Flexible. Essential.

New Dual Interface

Your business requires a solution for today's needs, with the flexibility to keep pace with changing customer and USPS® demands.

Shouldn't your software do the same?

BCC Mail Manager is regularly updated for compliance as well as to add new functionality, most recently with a dual interface called Companion Interface. This Interface offers the user-friendliness of our Bulk Mailer® solution with power and control for advanced users— all in one dual interface.

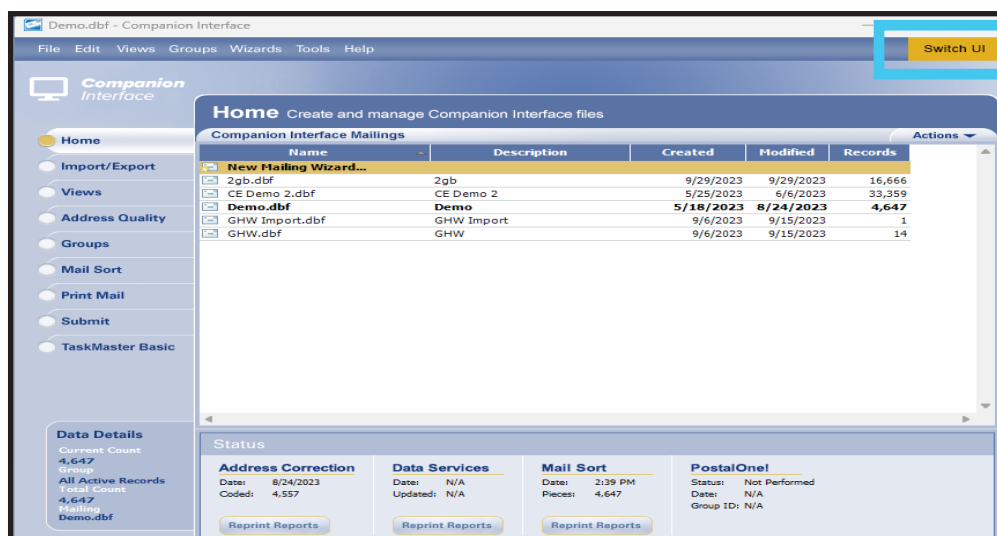
BCC Mail Manager provides the most comprehensive Intelligent Mail® solution set available, to help you grow, reduce your investment in list management tools, decrease unnecessary production and postage costs, and maximize your postal discounts.

BENEFITS

Improve your operations while increasing customer satisfaction with faster turnaround and diverse service offerings.

- » **Supports a broad range of USPS standards and offerings, including:** First-Class™, Standard, and Periodical mailings; Seamless Acceptance, Intelligent Mail (IMb®, IMcl, IMtl, IMpb) and other barcodes, and most preparation methods.
 - CASS™ and TEM Certified
 - PAVE™ Gold Certified in over 100 categories
 - ZAP + MAC™ Batch Certified
- » Powerful output functions using BCC Mail Manager's label designer. Perform elaborate merges, embed graphics, create formatted text boxes, and output to multiple label formats.
- » Improve marketing initiatives with data cleansing for compliance and enriching it with services like Rooftop Geocoding and PCOA through Data Marketing Services.
- » Imports and exports to most data file formats, including SQL.
- » Generates all required USPS documentation as well as production reports.
- » Maximizes equipment productivity.

Users can easily switch between **two interfaces** with a simple click.



FLEXIBLE TO SUPPORT CHANGING NEEDS

With BCC Mail Manager, you choose which features you want and add functionality as your needs evolve.

- » Numerous options easily accommodate your business as it changes
- » Keep up with changing customer demands
- » Quickly meet evolving postal regulations

INCREASE YOUR TIME SAVINGS

Beat deadlines and do more in the same amount of time.

- » Automate repetitive tasks, entire jobs, or batch processing
- » Consolidate disparate workflow steps and solutions needed using expressions/calculations for advanced data manipulation capabilities; pair with user-defined fields for even greater efficiency
- » Increase throughput and prevent bottlenecks with seamless parallel job processing
- » Reduce repetitive setup tasks using templates for customer data, list layouts, and label output
- » Save time by converting a single input list into multiple individual mailings using optional TaskMaster™ scripting to batch process output

FULL SERVICE INTELLIGENT MAIL® OPERATION

When you're ready to move to Full Service Intelligent Mail®, so is BCC Mail Manager—no new software to install.

- » Produces all required barcodes and provides serialization
- » Seamless Acceptance-ready
- » MID management tools included
- » Ability to update, modify, and create partial mailings with Mail.dat® tools

HOW CAN WE HELP?

BCC Software prides itself on our in-house customer support team, who are all certified USPS Mailpiece Design Professionals (MDPs). Need assistance? **Give us a call at (800) 624-5234.**

KEY FEATURES

BCC Mail Manager options can satisfy virtually every need you may have now or **in the future.**

- » Integrated Data Marketing Services
 - Flat Rate NCOA^{Link}® LSP/FSP
 - DSF²®
 - Suppression Services
 - Rooftop Geocoding
 - Address Resolution Services
 - Proprietary Change of Address (PCOA)
- » TaskMaster automation option
- » Track N Trace® (Informed Visibility® mailpiece tracking)
- » Mail Manifesting
 - First-Class Mail®
 - Standard Mail®
- » Palletization with all Mail Manager installations
 - Basic palletization for tray-based and package-based for supported classes of mail
 - Purchase advanced palletization options for USPS CSA, Sack-based pallets, and access to Advanced Pallet Settings
 - Advanced Palletization included for all Package Service presort options
- » Every Door Direct Mail (EDDM) List creation and presort for Letters and Flats
- » Package Services
 - Bound Printed Matter/Parcel Select®, including Parcel Select Lightweight
 - Media Mail®/Library Mail
- » Periodical Firm Packaging
- » Mail.dat™
- » MOVE Manager option for customers who license USPS NCOA^{Link} data in-house
- » Residential Delivery Indicator included



For more information on Mail Manager, visit: bccsoftware.com/mail-presort-suite/bcc-mail-manager



BCC Software, LLC • 1890 Winton Road South | Suite 180 | Rochester, NY 14623-3494 • (800) 337-0442 • sales@bccsoftware.com • bccsoftware.com

©2023 BCC Software, LLC. All rights reserved. The following are among the trademarks owned by BCC Software, LLC: BCC Software logo, AWAM™, DAT-MAIL™, PostalWeb®, wbSCAN™. The following are among the trademarks owned by the United States Postal Service: ACS™, APC®, Automated Postal Center®, Carrier Pickup™, CASS™, CASS Certified™, Certified Mail™, Click-N-Ship®, Confirm®, Customized MarketMail®, Delivery Confirmation™, DMM®, EPM®, Express Mail®, FAST®, FASTforward®, First-Class™, First-Class Mail®, Full-Service ACS™, IM™, IMb™, Intelligent Mail®, LACSLink™, MASS™, MERLIN®, Mover's Guide®, NCOALink®, Netpost®, Netpost Mailing Online™, OneCode ACS®, OneCode Confirm®, OneCode Solution™, OneCode Vision®, Parcel Post®, Parcel Select®, PC Postage®, PLANET®, PLANET Code®, Post Office™, PostalOne!®, Postal Service™, POSTNET™, Priority Mail®, Quick, Easy, Convenient™, RDI™, ReadyPost®, REDRESS®, Registered Mail™, RIBBS®, Signature Confirmation™, Simple Formulas®, Stamps by Mail®, Standard Mail®, The Postal Store®, United States Postal Service®, U.S. Mail™, U.S. Postal Service®, USPS®, USPS Electronic Postmark®, USPS.COM®, www.usps.com®, ZIP+4®, and ZIP Code™. Mail.dat® and Mail.XML™ are registered trademarks of the Delivery Technology Advocacy Council (DTAC). All other marks are held by their respective owners. Reproduction of this datasheet in whole or in part without permission is prohibited. The information contained herein is subject to change without notice. Actual performance results may vary. Contact BCC Software for current information.