

DAT-MAIL™

Mail.dat Submission and Compliance Software



» If you process Mail.dat® files, you need DAT-MAIL

Easy Automation = Less time and effort = Higher Profit Margins

DAT-MAIL MAKES POSTALONE! eDOCS QUICK AND EASY

- » Workflow automation capabilities reduce labor costs by automating more
- » User interface makes editing quick and easy without any specialized Mail.dat knowledge
- » Priority Mail Open and Distribute drop shipment processing

PostalOne! Customer Data allows easy access to accurate customer MIDs, CRIDs, permits and NPA's

- » Integrates with wbSCAN™ for intelligent trailer loading and finished mail pallet inventory management
- » Generates comprehensive reports for production, distribution, customer service and accounting departments
- » Automated Mail.dat submission to PostalOne! and access to PostalWeb® for automated PostalOne! statement retrieval. Never has interacting with PostalOne! been so automated and fool-proof

CREATE eDOCS THAT REFLECT WHAT YOU ARE REALLY MAILING

- » Manage partial mailings
- » Automated adjustment of eDoc for spoilage, shortages and "pulls"
- » Mailing date, piece weight, By/For, permit, entry point, payment method and other common changes can be made easily without Mail.dat knowledge
- » Easy to add sibling / remove trays (or pallets) if piece thickness in presort is incorrect
- » Use the barcode query screen to add sibling trays, reprint tray tags by scanning mailpieces
- » Includes utilities to merge and split Mail.dat files
- » Some functions require other modules

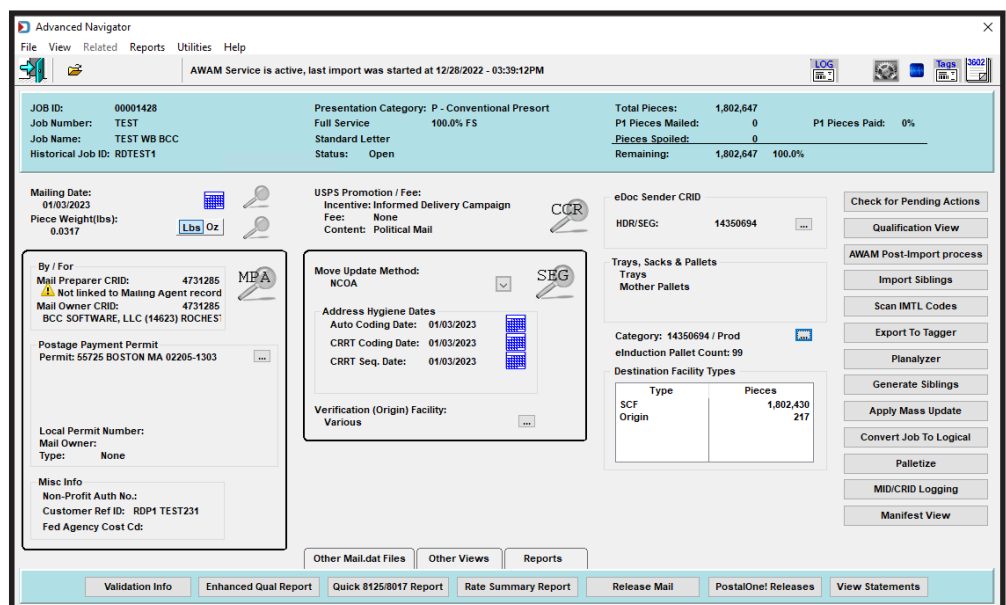
DAT-MAIL's **Advanced Navigator** helps mailers make the changes they need with minimal knowledge about Mail.dat

KEY FEATURES

Advanced automation without needing to be a coder

Complete integration to USPS PostalOne and MDR Clients

Quick, simple file edits to key Mail.dat fields



» Bundle your DAT-MAIL solution to meet your unique needs

1) DAT-MAIL TOOLBOX

- » Optimizes freight plans for single jobs or multiple jobs at the same time
- » Optimizes a job for a combination of copal and drop ship
- » Multi-carrier Trailer Manifesting allows easy trailer loading across jobs to consolidators, logistics carriers, even origin mail
- » Provides instant easy access to USPS drop ship facility data

2) PRIORITY MAIL OPEN AND DISTRIBUTE (PMOD)

- » Easily select and analyze entry points for PMOD
- » Purchase PMOD postage using ePostage account right from DAT-MAIL
- » Quickly generate PMOD labels, tags, production and USPS reports

SEND ALASKA, HAWAII, PUERTO RICO AND GUAM MAIL FASTER WITH PMOD

3) DAT-MAIL PALLETIZATION MODULE

- » Palletizes mail (trays/sacks on pallets) when presort programs cannot
- » Option for First-Class mailers to palletize based on a CSA
- » Supports internal co-palletization – **do it yourself and save**

OUR COPAL EXPERTS CAN HELP

4) wbSCAN AND MULTI-CARRIER TRAILER MANIFESTING

- » Easily manage trailer loading and finished mail pallet inventory
- » Multi-carrier trailer loading, manifesting and connectivity
- » Use network connected handheld, tablet and desktop computers to interact with your DAT-MAIL data in real time, right on the shop floor

» For more information on **DAT-MAIL**, visit: bccsoftware.com/dat-mail



BCC Software, LLC • 75 Josons Drive, Rochester, NY 14623-3494 • (800) 337-0442 • sales@bccsoftware.com • bccsoftware.com

©2023 BCC Software, LLC. All rights reserved. The following are among the trademarks owned by BCC Software, LLC: BCC Software logo, AWAM™, DAT-MAIL™, PostalWeb®, wbSCAN™. The following are trademarks owned by the United States Postal Service: ACS™, APC®, Automated Postal Center®, Carrier Pickup™, CASS™, CASS Certified™, Certified Mail™, Click-N-Ship®, Confirm®, Customized Mail Confirmation™, DMM®, EPM®, Express Mail®, FAST®, FASTforward®, First-Class™, First-Class Mail®, Full-Service ACS™, IM™, IMb™, Intelligent Mail®, LACSLink™, MASS™, MERLIN®, Mover's Guide™, Netpost®, Netpost Mailing Online™, OneCode ACS®, OneCode Confirm®, OneCode Solution™, OneCode Vision®, Parcel Post®, Parcel Select®, PC Postage®, PLANET®, PLANET Code®, Post Office™, PostalOne!®, Postal Service™, POSTNET™, Priority Mail®, Quick, Easy, Convenient™, RDI™, ReadyPost®, REDRESS®, Registered Mail™, RIBBS®, Signature Confirmation™, Simple Formulas®, Stamps by Mail®, Standard Mail®, The Postal Store®, United States Postal Service®, U.S. Mail™, U.S. Postal Service®, USPS®, USPS Electronic Postmark®, USPS.COM®, www.usps.com®, ZIP+4®, and ZIP Code™. Mail.dat® and Mail.XML™ are registered trademarks of the Delivery Technology Advocacy Council (DTAC). All other marks are held by their respective owners. Reproduction of this datasheet in whole or in part without permission is prohibited. The information contained herein is subject to change without notice. Actual performance results may vary. Contact BCC Software for current information.

FPO

COMPLIANCE HAS NEVER BEEN EASIER

- » Warns of duplicate tray and pallet barcodes across all mailings
- » Verifies that the labeling list used in the presort is correct based on likely induction dates
- » Displays "By/For" info on every job and makes it easy to correct it or add it if missing
- » Integration with PostalWeb assures your eDoc makes it to PostalOne! and warns you if it does not
- » Research undocumented pieces and containers with the Undocumented Piece Audit Report

5) SPOILAGE MANAGEMENT

- » Removes spoilage, shortages and "pulls" at the rates claimed by the presort for extra postage savings
- » Processes can be automated by using files created by most intelligent inserters
- » Allows use of IMb barcodes from spoiled pieces

6) ADVANCED WORKFLOW AUTOMATION MANAGER (AWAM)™

- » Automates Mail.dat import process along with many post-import changes
- » Powerful tool for importing mail.dats and making updates / changes **before or after importing file(s)**.
- » AWAM Post-Process is **GREAT** for tasks that can't be done before the file is imported.
- » Can process multiple jobs concurrently
- » AWAM profiles can be managed by all DAT-MAIL users